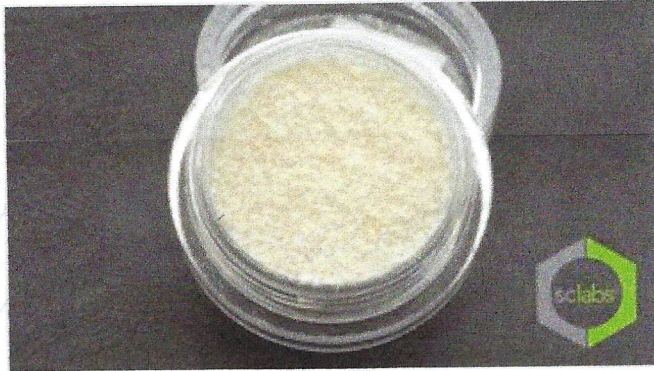



[My Samples \(/samples/\)](/samples/) > Nano-Particle Isolate Water Soluble 16% 150mg



 Hover to Zoom In

Nano-Particle Isolate Water Soluble 16% 150mg

Harmonized Solutions, LLC.

[\(/client/9591/\)](/client/9591/)

Date: 04-03-2020

Sample Number: 200403R019

Sample Type: Concentrate, Product Inhalable

Batch ID: 10081988

[Download](#) [Public](#) [Share](#)

[Show Less](#)

Potency Test

Tested 

Full spectrum cannabinoid profiling and analysis utilizing High Performance Liquid Chromatography (HPLC/UV)

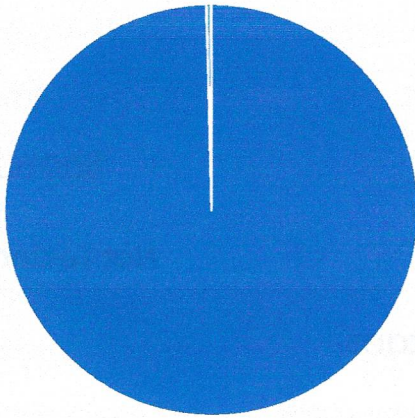
Cannabinoid Summary

Total THC	$\Delta 9\text{THC} + 0.877 * \text{THCa}$	ND
Total CBD	$\text{CBD} + 0.877 * \text{CBDa}$	16.394 %

Full Cannabinoid Profile

Tetrahydrocannabinol	$\Delta 9\text{THC}$	ND
Delta 8 Tetrahydrocannabinol	$\Delta 8\text{THC}$	ND
Tetrahydrocannabinolic Acid	THCa	ND
Tetrahydrocannabivarin	THCV	ND
Tetrahydrocannabivarin Acid	THCVa	ND
Cannabidiol	CBD	16.3940 %
Cannabidiolic Acid	CBDa	ND
Cannabidivarin	CBDV	0.0636 %
Cannabidivarin Acid	CBDVa	ND
Cannabigerol	CBG	ND
Cannabigerolic Acid	CBGa	ND
Cannabicyclol	CBL	ND
Cannabinol	CBN	ND
Cannabichromene	CBC	ND
Cannabichromene Acid	CBCa	ND

Cannabinoid Ratio



- | | |
|--|---|
| ● Δ9THC 0 % | ● Δ8THC 0 % |
| ● THCa 0 % | ● THCv 0 % |
| ● THCVA 0 % | ● CBD 16.394 % |
| ● CBDa 0 % | ● CBDV 0.0636 % |
| ● CBDVa 0 % | ● CBG 0 % |
| ● CBGa 0 % | ● CBL 0 % |
| ● CBN 0 % | ● CBC 0 % |
| ● CBCA 0 % | |

[Show More](#)

Terpene Test

Not Tested

Identification and Quantification of Terpenes

[Show More](#)

Pesticide Test

Not Tested

Screening for Pesticide and Fungicide Residue